



Sentiers Chelsea Trails

2017 – 2018

A year of Challenge and Achievement



Year In Review: Major Projects & Proposals

1. Chelsea Community Trail
2. Notch/Mine Road Bike Lanes
3. Chelsea Park Trail Building
4. Des Pommiers Trail Bridge
5. Proposed Trail Connection Between Centre Village & Gatineau/Ottawa Trail Networks
6. Proposed Centre Village Community Trail
7. Connecting Tunnels Under A5?
8. Future Trail Possibilities
9. Thank you!



Chelsea Community Trail - Moving Forward

- New Municipal Council had resolved to move ahead with a 4 season, multi-purpose trail
- Environmental, Geotechnical, and Social Impact studies completed
- Rails and ties removed, with some basic grading
- Municipality planning to upgrade drainage & undertake soil decontamination
- Voie Verte Chelsea - a new charity created to raise money to help finance the Chelsea Community Trail, with fundraising goal of \$1 million.

Community Trail – Removal of Rails and Ties



Chelsea Community Trail – SCT Vision 2.0



Chelsea Community Trail - Public Input

- Design consultation with trail neighbours
- Design charrette with public at large
- SCT Vision 2.0 shared with Council and public



Chelsea Community Trail – Winter Use

- 13 years experience with a groomed winter trail
- SCT fundraises from local business and trail users to help with grooming costs
- SCT will donate \$8K this year, most from the following trail sponsors:
 - Gazifère
 - Greg Christie's Ski and Cycle
 - Nordik Spa-Nature
 - Lafleur de la Capitale Inc.
 - Physiosport Chelsea
 - Le Pub Chelsea
 - Clinique Vétérinaire de la Gatineau Inc.
 - Moulin Wakefield Mill
 - Ed Brunet Entrepreneur general
- Historically, SCT has fund raised a total of \$29,200 for grooming



Chelsea Community Trail – Winter Use

Grooming extended to Farm Point



Trail Celebration 2018



Notch/Mine Road Bike Lanes

- SCT has advocated bike lanes for Mine, Notch and Kingsmere for several years. The advantages of extra width for pedestrians and cyclists, especially on the section of Kingsmere linking Notch to Old Chelsea, have now been recognized.
- In January 2018, Federal and Quebec governments announced that they would each contribute \$490K to this project. Together with support from the NCC, contributions amount to \$1.28M.
- Chelsea Council subsequently approved the letting of contracts for detailed planning of these works, which will be combined with necessary road repairs.
- Construction is expected to start in 2018 but will likely proceed in a phased manner.

Chelsea Park Trails – A Community Effort



Chelsea Park - Bridge Building

Volunteers completed a second major bridge as well as trail maintenance, with more trail work planned for the coming year.



Chelsea Park - Bridge Building



Chelsea Park – Showing the Community

An annual trail hike was held with almost 60 participants – a great success



Des Pommiers Trail - Bridge Construction

A new beaver dam turned a creek into a pond, requiring construction of a bridge



Des Pommiers Trail - Bridge Construction

After 90 hours of volunteer labour...



Potential Future Trail Connections

- New development presents both challenges and opportunities for new trails.
- SCT NEEDS TO BE MORE ACTIVE THAN EVER.
- Benefits of trails developed by private developers have been amply demonstrated and we hope will be emulated by others.
- Integration of trails on private lands, on lands acquired by the Municipality through subdivision and beyond onto the NCC trail system require vision, energy and persistence.
- The Active Transport Plan provides the former. You provide the rest.

Proposed Trail Connection between Centre Village & Gatineau/Ottawa trail networks



Proposed Trail Connection between Centre Village & Gatineau/Ottawa trail networks

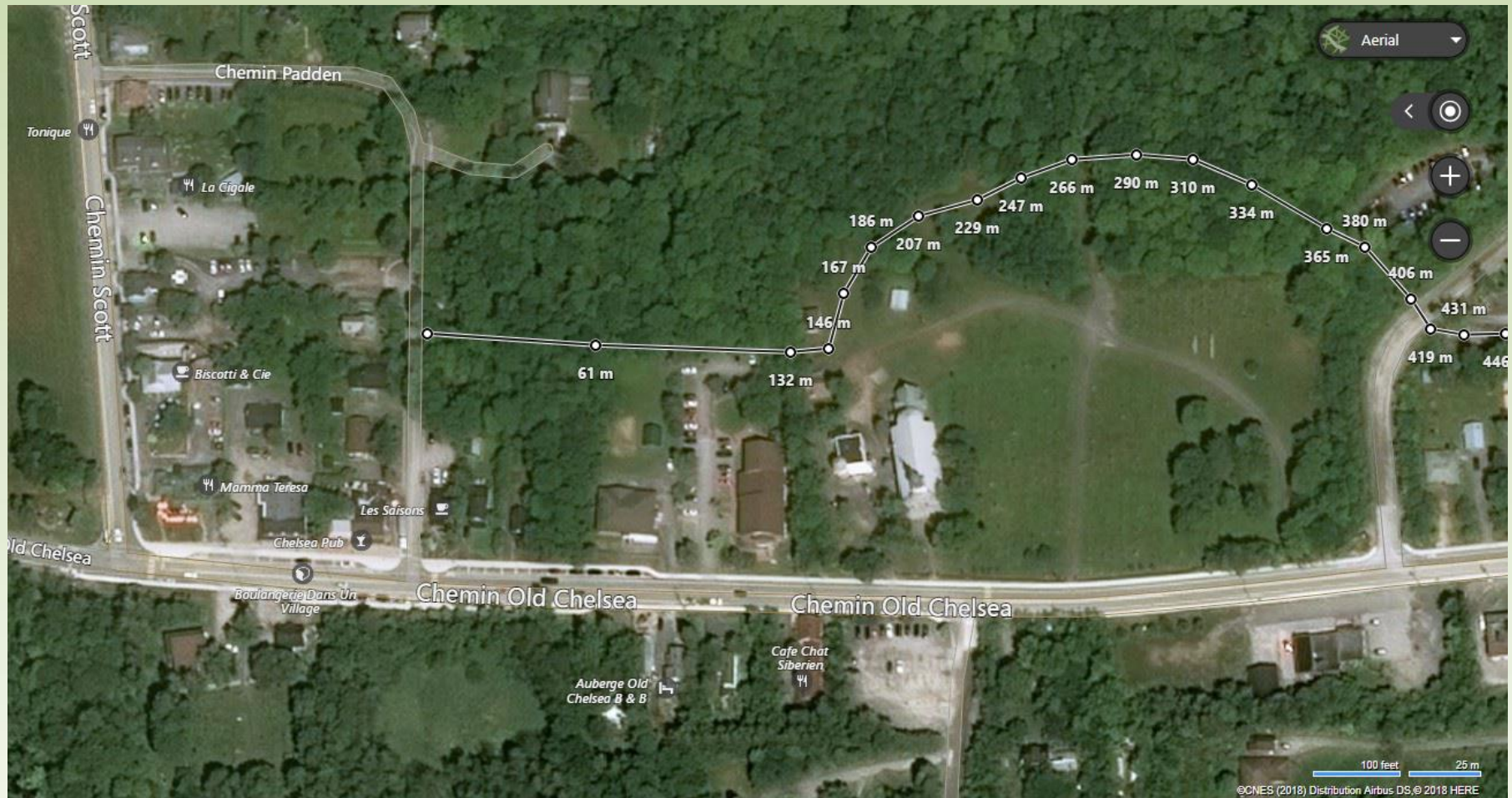
- SCT envisions a stone dust commuting trail on the east side of the A5 connecting Centre Village to the Gatineau/Ottawa trail networks; identified as a key axial route in the ATP
- In 2017 Gazifère installed a gas pipeline along this A5 corridor from Blvd de Technologie in Gatineau to Old Chelsea Road
- Discussions underway with Municipality, Gazifère and MTQ to pursue trail vision using this pipeline corridor
- Bridge over Chelsea Creek is a significant challenge



Proposed Centre Village Community Trail

- SCT is facilitating discussion about a proposed new trail from Padden Road, behind St. Stephens, to exit on Old Chelsea Road near the A5
- The route was conceived by Commerce Chelsea who support SCT's initiative
- The concept and route has preliminary support from land owners, including St. Stephens, the MRC and local businesses

Proposed Centre Village Community Trail



Chelsea Park/Tenaga – More to Come

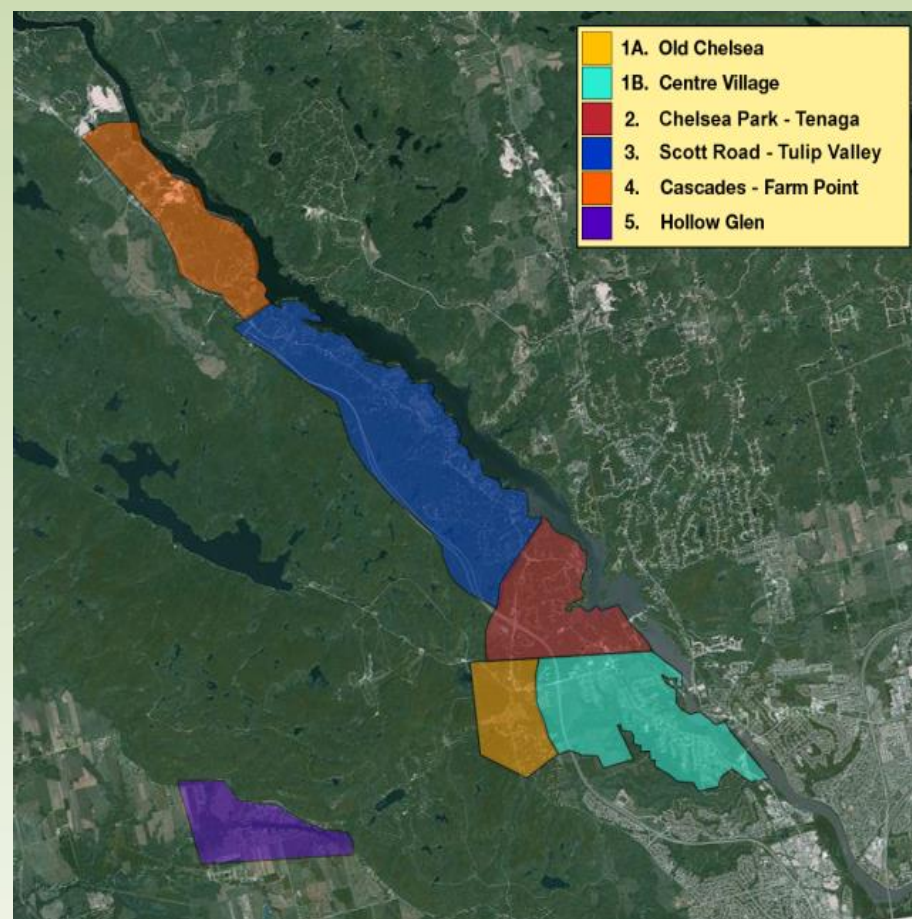
- Les travaux des sentiers sur les propriétés de la municipalité (Manoir à Meredith et Meredith à Scott) sont proposés pour cette année – awaiting decision of the municipality
- SCT has approached the Municipality and the owner of the Meredith property regarding a potential trail from Chelsea Park to the Meredith Centre – awaiting feedback
- Le conseil d'administration de SCT aura à discuter de la signalisation/ balisage qui longera les sentiers

Connecting Tunnels Under A5?

- Possibility exists that the NCC may expand its Gatineau Park trail network to include connections to tunnels under A5
- SCT has offered to work with the Municipality and other key stakeholders (such as MTQ, NCC and private property owners) to discuss possibilities for connecting Park trails to existing trails on the eastern side of the A5
- Proposal is subject to many constraints – not a certainty!

Board of Directors 2017-2018

Michel Gravel – President
 Michel Hébert – Vice-president, Sector 1E
 Alain Piché – Treasurer
 Heidi von Graevenitz – Secretary,
 Communications
 Roberta Walker – Communications
 Lyse Huot – Communications
 Giles Morrell – Sector 1W
 Marc Desjardins – Sector 2
 Eric Partington – Sector 3
 Doug Taylor – Sector 4
 Chris Pawluk – Sector 5 (acting)
 Sean Silcoff - Director



Thank you!

To all our volunteers who contributed hundreds of hours of work



To Suzanne Cayer who walked 800 km and raised \$1,119 for the conversion of the Chelsea Community Trail

